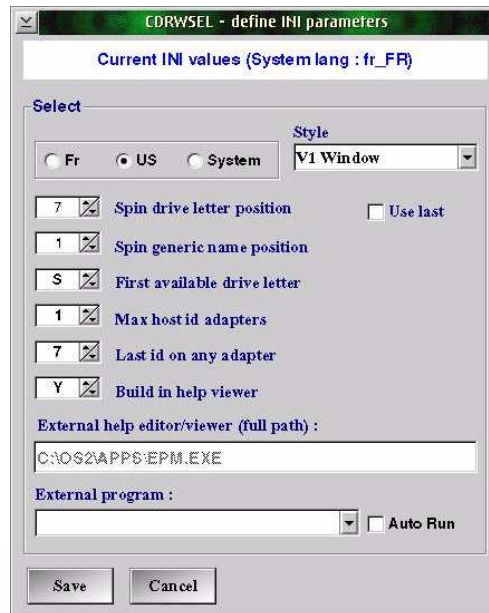


CDRWSEL - first instructions

Click on the icon created by the installation program to Start CDRWSEL

1/ A message tells you that no INI file exist and the first step consist to define one.
First window :



Change needed parameters and select the window style you would like ("V1 Window" has colored icons). To exit, click on [Save](#)

Next window:



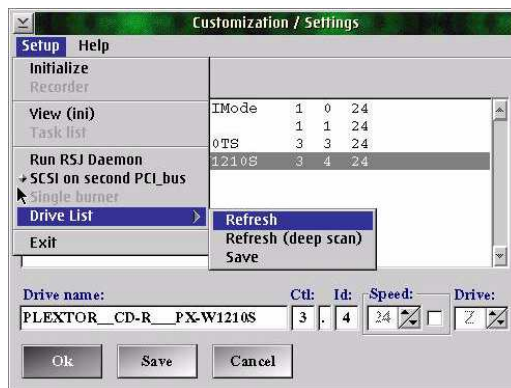
If the list is empty, verify that you have "SET TMP=dir_name" into config.sys and the path has no blank. If you have a doubt, use a classic 8 caracters name.

A fast run to find CD-ROM / DvD and burners is done and the list is updated. [Click 2 times on a device to remove it](#) from the list. [Click one time](#) will display the current line into the modifiable field (changing ctl or id will create a new entry into the list. All other action will update current selected device). Spin button **Drive:** is always disabled at first ini file definition.

Remy DODIN (c)

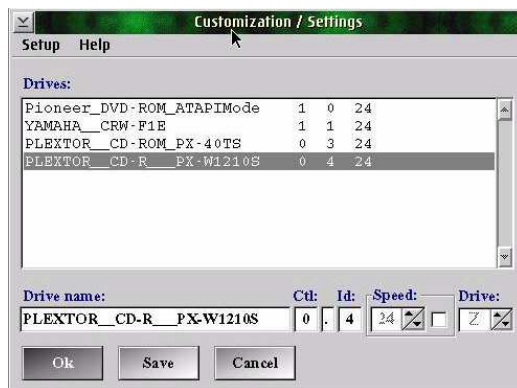
CDRWSel - first instructions

Next window;



If the list is incorrect (ex: You have an SCSI card plugged into a PCI slot on a different BUS as the IDE is). Click on SCSI on second PCI bus and run again a "Drive List" "Refresh". The "Refresh (deep scan)" gives you only a list resulting of an attach test return code and will scan all Ctl.Id range as given into the Define ini parameter window. Names are than generic names.

Next window:



The List is updated and as you can see, IDE device (ex: YAMAHA) has the same Ctl-id but SCSI Ctl has changed.

Next window



CDRWSel - first instructions

After removing device which are not burner (click 2 times on devices to do it), the list is ok.
Click on [Save](#) and restart CDRWSel

Next window:



V1 Window appear with the same drive letter for all devices. To change them, [click on Settings](#)

Next window:



Select the drive to update (don't change Ctl or Id). Select a Drive letter for this device (eventually, if you want to change speed, click on the speed check box and select a default speed). Click on [Ok](#) to validate the update (list is than updated). Repeat the operation for each device into the list. Once you have finish, click on [Save](#) and [close](#) the window (or Cancel)

CDRWSel - first instructions

What about RSJ Daemon ?

During a normal RSJ installation, CDWFSD (rsj daemon) is added into your config.sys file. The daemon has interesting parameters, like cache size, lock drive door and more. You can change these parameter through normal "RSJ CD Writer Control" program but now, CDRWsel gives you more flexibility.

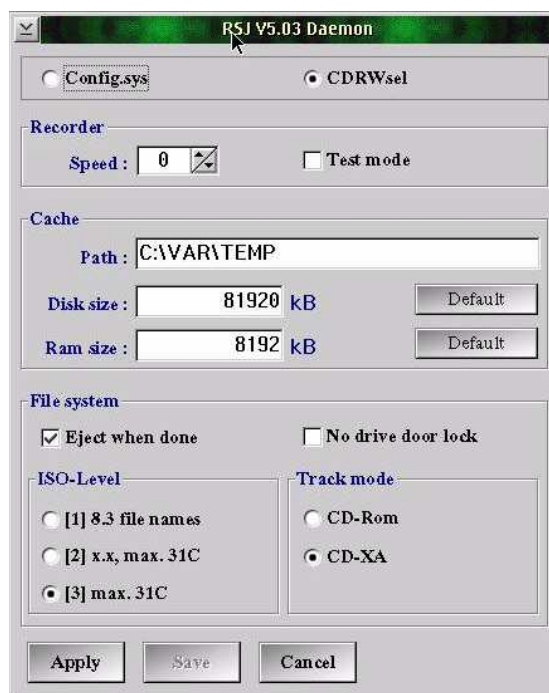
Several RSJ user didn't add the daemon into config.sys to prevent loading it at Os/2 or eCS initialisation time but they need it to use RSJ.

You can check and run RSJ daemon automatically through CDRWsel. Check ["Run RSJ Daemon"](#) as follow. This will allow you to access "Recorder" options (same options as through "RSJ CD Writer Control" but

RSJ Daemon selection window:



Click on "Recorder" (**detach all drives before making changes in following window**)



CDRWSel - first instructions

- Extra parameters exist. Choice between [config.sys or CDRWSel](#)

[Config.sys](#) will update the config.sys file with new parameters (re-boot is needed). Old line is made a REM line and a new Run is added for the new parameters.

[CDRWSel](#) will use parameters saved into CDRWSel.ini file and at apply time, current running

Daemon is replaced by the new one with the new parameters. Config.sys information aren't used.