



Windows Installation Guide

Revision 4

EDM04-02

Copyright © 2005.

Published by:

Endace Measurement Systems® Ltd
Building 7, 17 Lambie Drive
PO Box 76802
Manukau City 1702
New Zealand
Phone: ++64 9 262 7260
Fax: ++64 9 262 7261

support@endace.com

www.endace.com

International Locations

New Zealand

Endace Technology® Ltd
12 Knox Street
PO Box 19246
Hamilton
New Zealand 2001
++64 7 839-0540

support@endace.com

www.endace.com

Americas

Endace USA® Ltd
Suite 220
11495 Sunset Hill Road
Reston
Virginia 20190
United States of America
Phone: ++1 703 382 0155
Fax: ++1 703 382 0155

support@endace.com

www.endace.com

Europe, Middle East & Africa

Endace Europe® Ltd
Sheraton House
Castle Park
Cambridge CB3 0AX
United Kingdom
Phone: ++44 1223 370 176
Fax: ++44 1223 370 040

support@endace.com

www.endace.com

Typographical Conventions Used in this Document

- Command-line examples suitable for entering at command prompts are displayed in mono-space courier font.

Results generated by example command-lines are also displayed in mono-space courier font.

- Information relating to functions not implemented in this beta version of this product are underlined

Table of Contents

1.0 PREFACE	1
1.1 User Manual Purpose	1
1.2 Operating System Requirements	1
1.3 Print Document	1
2.0 ENDACE DAG SOFTWARE INSTALLATION	2
2.1 Software Package Installation	2
2.2 Software Removal	4
3.0 SOFTWARE SUPPORT	6
3.1 Software Upgrade.....	6
3.2 Programming with DAG	15
3.3 Reporting Problems.....	15

1.0 PREFACE

Viewing this document This document is available when the installation CD is placed in a running Windows PC.

1.1 User Manual Purpose

Description The purpose of the User Manual is to identify and explain:

-
-

1.2 Operating System Requirements

Description The Endace Windows Software is designed to run in the Microsoft Windows[®] XP-Professional[®], Windows 2000 Server and Windows Server 2003.

1.3 Print Document

Description It is recommended that this document be printed and bound or stapled for self-study and reference purposes during the installation process.

2.0 ENDACE DAG SOFTWARE INSTALLATION

Introduction The DAG software 2.5.6.1 release is a Microsoft Installer Package (.msi). It is used to install the DAG software tools, drivers and documents. The Endace 2.5.6.1 .msi package is available from the Endace Secure Support website <http://endace.com/secureLogin.htm>. It is also available on the CD shipped with DAG cards.

The CD auto-runs when placed in a running Windows PC and displays the DAG card user manuals and the software installation manuals. Physically browsing the CD will display four folders consisting of:

1. contrib
2. docs
3. Linux-FreeBSD
4. Windows

The contrib folder holds all applications. The docs folder contains the latest documentation. The Linux-FreeBSD folder contains the 2.5.5 tarball which is only required if the Linux operating system is running.

The Windows folder contains the 2.5.6.1.msi.

In this chapter This chapter covers the following sections of information.

-
-

2.1 Software Package Installation

Description To install the software package after the CD is inserted in a CD drive, double click on the .msi file screen display and follow the on-screen instructions. The installation proceeds in the same manner as other Windows file downloads by following the on-screen prompts after clicking the icon.

The software and driver have been tested using Windows XP Professional distribution.

Evaluating disk space Before installing the DAG software 2.5.5, the disk space requirement can be verified by clicking "Disk Cost".

Selection of destination folder The DAG tools and drivers are created in Endace/dag-2.5.6.1 subfolder within the Program Files folder by default. To install them to a different folder, the user can either specify the path of the destination folder or click "Browse".

A shortcut to the document folder is created on the user's desktop.

2.2 Software Removal

Description The installer package can be re-used to uninstall the DAG software. The user is prompted with the "Repair" and "Remove" option.

The "Remove" option can be selected for uninstalling/removing the DAG software and the "Repair" option for repairing any corrupted files.

3.0 SOFTWARE SUPPORT

Introduction The support provided by Endace Technology includes software upgrades, programming with DAG, and actions to take when there is trouble with the software.

In this chapter This chapter covers the following sections of information.

-
-
-

3.1 Software Upgrade

Description Software updates are available periodically from Endace that may add features or fix problems.

For those with a support contract, the software updates can be accessed using support login at the Endace website, <http://www.endace.com/support.htm>.

To subscribe to mailing list for automatic notification of software updates and documentation, contact support@endace.com

The following installation procedure for new software releases ensures upgrading is easy and consistent.

Procedure Follow these steps to upgrade software.

Step 1. Locate the Device Manager

Device Manager can be located either through Control Panel-> System->Hardware or by right clicking on "My Computer"->Properties->Hardware.

Continued on next page

, continued

(continued)

Step 2. Load driver for the Network Controller

Right click on the "Network Controller" under "Other devices" and select the "Update driver".

NOTE: For Windows 2000 Server, click on "Properties" and then click on the "Driver" tab to proceed with 'Update Driver' option.

Figure 3-1 shows the 'Update Driver' menu within the 'Other devices' node located in the Device Manager.

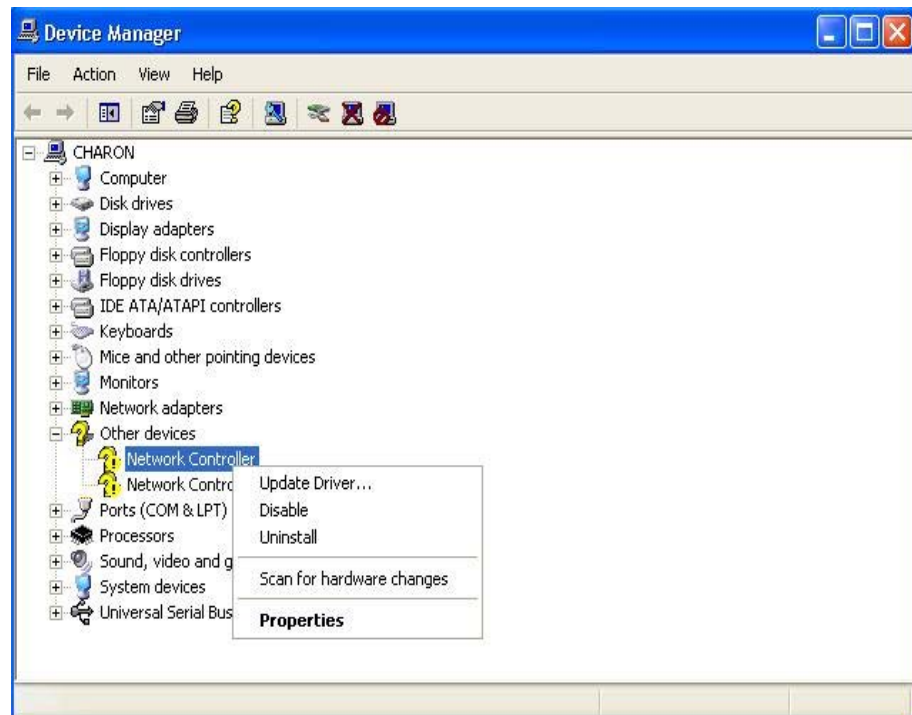


Figure 3-1. Update Driver Menu.

Continued on next page

, continued

(continued)

Step 3. Hardware Update Wizard

The following dialog may appear. Choose “No, not this time” and click “Next”.

NOTE: For Windows 2000 Server, an "Upgrade Device Driver Wizard" appears instead of "Hardware Update Wizard". Click 'Next' to continue.

Figure 3-2 shows the Hardware Update Wizard dialog screen display.



Figure 3-2. Hardware Update Wizard Dialog Screen Display.

Continued on next page

, continued

(continued)

Step 4. Options of Hardware Update Wizard

Choose the option "Install from a list or specific location" in the "Hardware Update Wizard" and click "Next".

NOTE: For Windows 2000 Server, choose "Display a list of the known drivers for the device so that I can choose a specific driver" option.

Figure 3-3 shows the Install from a list or specific location option screen view.



Figure 3-3. Install from a List or Specified Location Option Screen View.

Continued on next page

, continued

(continued)

Step 5. Options of Hardware Update Wizard

Choose the option "Don't search. I will choose the driver to install." in the "Hardware Update Wizard" and click "Next".

NOTE: This screen view does not appear for Windows 2000 Server.

Figure 3-4 shows the driver to install option screen view.

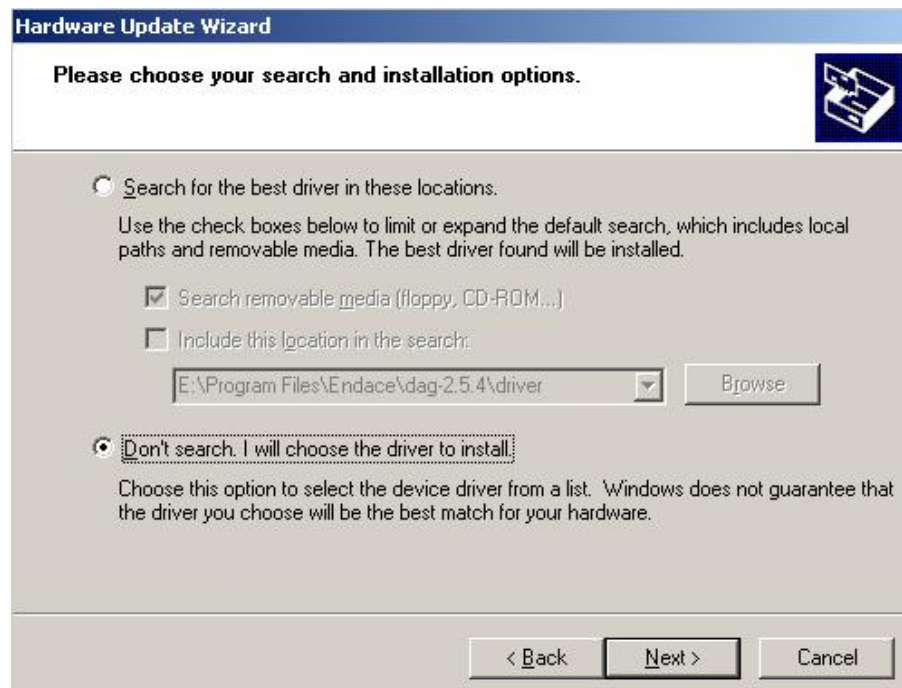


Figure 3-4. Driver to Install Option Screen View.

Continued on next page

, continued

(continued)

Step 6. Options of Hardware Update Wizard

Click "Have Disk" and locate the installation file DAG.inf using "Browse".

NOTE: For Windows 2000 Server, extra options appear at the bottom left corner of the dialog box. Choose "Show compatible hardware" option and follow this Step 6.

Figure 3-5 shows the Have Disk option screen view.

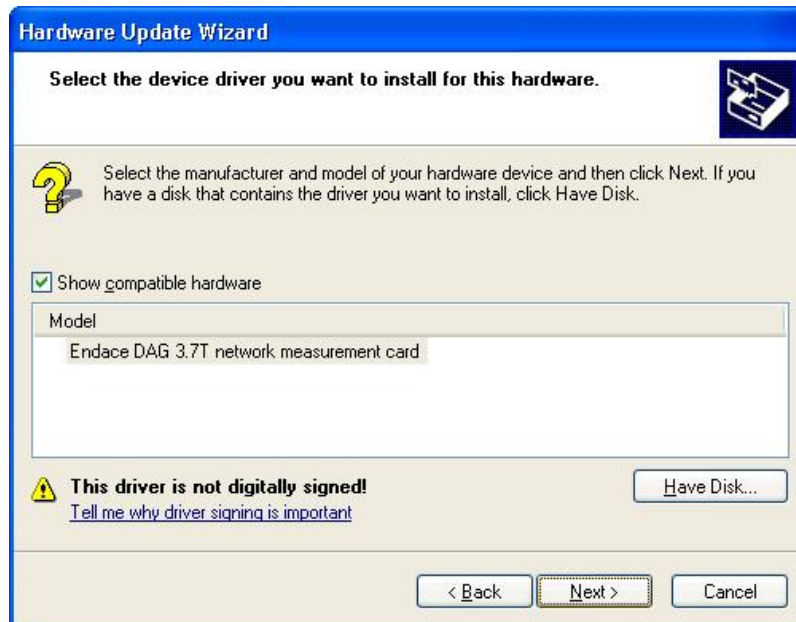


Figure 3-5. Have Disk Option Screen View.

Step 7. Locate installation files

Locate the installation file either from "[Windows folder]/inf" or from the path mentioned during DAG Software installation and click "OK".

Click "Next" and choose "Continue Anyway", followed by clicking "Next" and then click "Finish"

NOTE: For Windows 2000 Server, "Continue Anyway" may not appear. Click "Next" and then "Finish" to complete the installation.

Continued on next page

, continued

(continued)

Figure 3-6 shows the Locate Installation Files screen view.

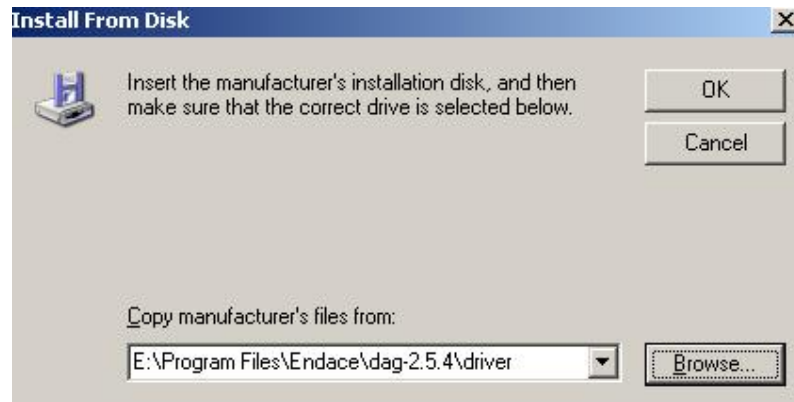


Figure 3-6. Locate Installation Files Screen View.

NOTE: If the driver and the dlls are being installed as an update to the beta release, the older versions of the DAG64.sys, dagapi.dll and dagapi37t.dll may need to be manually removed. These files can usually be found at %WINDOWS%\System32\drivers.

If those files are not deleted, a message may appear asking to overwrite the older versions with the newer ones. The overwrite option should be chosen.

Step 8. Set the environment variable

Edit the “PATH” variable (one of the system variables) by adding the string “;%DAGPath %” to it.

The “PATH” variable can be located either through Control Panel->System->Advanced->Environment Variables or by right clicking on “My Computer”->Properties->Advanced->Environment Variables.

Continued on next page

, continued

(continued)

Figure 3.7 shows the Environment Variable screen display.

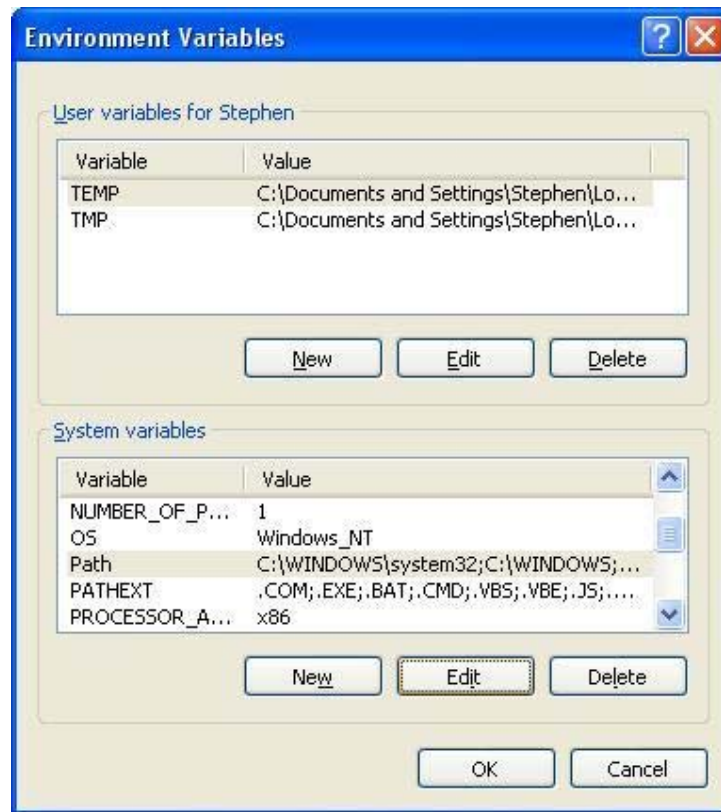


Figure 3-7. Environment Variable Screen Display.

Choose “Path” and click “Edit” on the screen above.

Figure 3-8 shows the Edit System Variable screen display.



Figure 3-8. Edit System Variable Screen Display.

Step 9. Reboot the System

3.2 Programming with DAG

Description All DAG cards present a common C language API for user programs.

Further details about the API can be requested by emailing support@endace.com for a copy of the DAG Programming Guide.

3.3 Reporting Problems

Description Support is provided with a service contract. If problems with a DAG card or supplied software, contact Endace Technical Support via the email address support@endace.com. Supplying sufficient information about trouble enables causation to be quickly identified and corrective actions advised.

Problem checklist The exact information available to users for trouble, cause and correction analysis may be limited by nature of the problem. The following items assist a quick problem resolution:

Ref	Item
1.	DAG card[s] model and serial number.
2.	Host PC type and configuration.
3.	Host PC operating system version.
4.	DAG software version package in use.
5.	Any errors or warnings when installing DAG driver or tools.
6.	Output of <code>daginf</code> .
7.	Firmware versions from <code>dagrom -x</code> .
8.	Physical layer status reported by: <ul style="list-style-type: none"> • <code>dagthree</code> for DAG 3 series cards • <code>dagfour</code> for DAG 4 series cards
9.	Network link statistics reported by: <ul style="list-style-type: none"> • <code>dagthree -si</code> for DAG 3 series cards • <code>dagfour -si</code> for DAG 4 series cards
10.	Network link configuration from the router where available.
11.	Contents of any scripts in use.
12.	Complete output of session where error occurred including any error messages from DAG tools.
13.	A small section of a captured packet traces illustrating the problem.
14.	Any error or warning messages logged in event viewer.